

# AMES HIGH LOYALTY

Flute

Richard Day  
arr. by Roger Cichy

9

10

17

19

25

28

*Fine* 33

37

*D.C. al Fine*

# AMES HIGH LOYALTY

Clarinet in B $\flat$

Richard Day  
arr. by Roger Cichy

9

10

17

19

25

28

*Fine* 33

37

*D.C. al Fine*

# AMES HIGH LOYALTY

Alto Sax.

Richard Day  
arr. by Roger Cichy

9

10

17

19

25

28

*Fine* 33

37

*D.C. al Fine*

# AMES HIGH LOYALTY

Trumpet in B $\flat$  1

Richard Day  
arr. by Roger Cichy

9



10



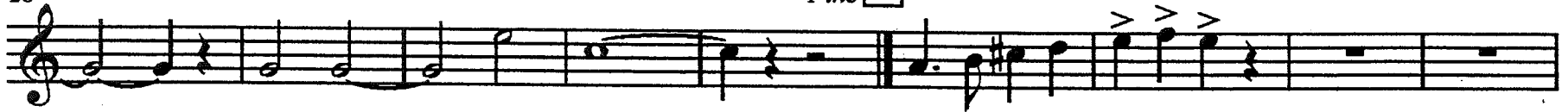
17

19



25

28



*Fine* 33

37



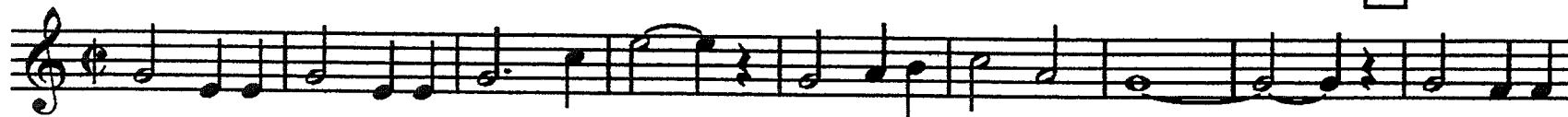
*D.C. al Fine*

# AMES HIGH LOYALTY

Trumpet in B $\flat$  2

Richard Day  
arr. by Roger Cichy

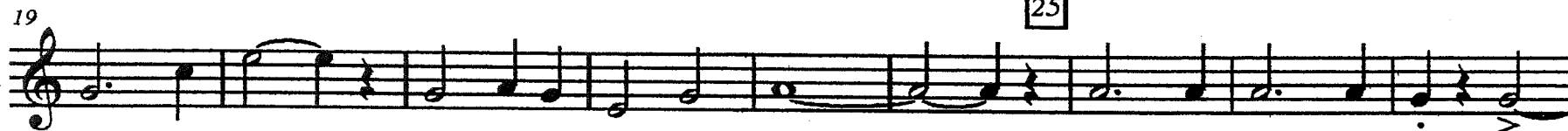
9



17



25



Fine 33



D.C. al Fine



# AMES HIGH LOYALTY

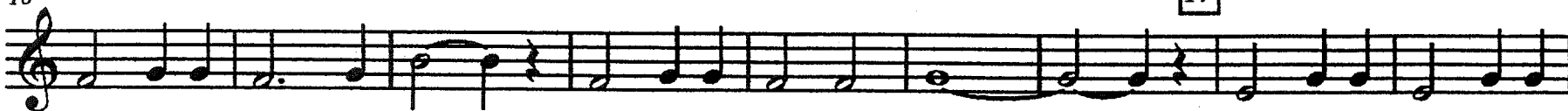
Trumpet in B $\flat$  3

Richard Day  
arr. by Roger Cichy

9



10



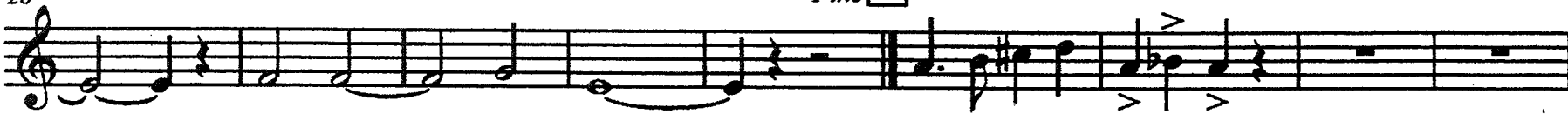
17

19



25

28



*Fine* 33

37



*D.C. al Fine*

# AMES HIGH LOYALTY

Horn in F

Richard Day  
arr. by Roger Cichy

9



# AMES HIGH LOYALTY

Trombone 1

Richard Day  
arr. by Roger Cichy

Musical staff 1 (measures 1-9) in bass clef with a key signature of one flat. It begins with a *p* dynamic and includes various articulations such as accents and slurs. A measure number '9' is boxed at the end of the staff.

10

Musical staff 2 (measures 10-17) in bass clef. It continues the melodic line with various articulations. A measure number '17' is boxed at the end of the staff.

19

Musical staff 3 (measures 19-24) in bass clef. It features a long slur over measures 23 and 24. A measure number '25' is boxed at the end of the staff.

28

Musical staff 4 (measures 28-32) in bass clef. It includes a *Fine* marking above measure 32. A measure number '33' is boxed at the end of the staff.

37


Musical staff 5 (measures 37-42) in bass clef. It concludes with a *D.C. al Fine* instruction. A measure number '37' is at the start of the staff.



# AMES HIGH LOYALTY

Trombone 2/Baritone B.C.

Richard Day  
arr. by Roger Cichy



Musical staff 1, measures 1-9. Includes dynamic markings *p* and *p*, and accents (>). A boxed measure number 9 is at the end.

10



Musical staff 2, measures 10-17. Includes accents (>) and dynamic markings *p*. A boxed measure number 17 is at the end.

19



Musical staff 3, measures 19-25. Includes accents (>) and dynamic markings *p*. A boxed measure number 25 is at the end.

28



Musical staff 4, measures 28-33. Includes dynamic markings *p* and *p*, accents (>), and an accent (^). A boxed measure number 33 is at the end, with the word *Fine* above it.

37



Musical staff 5, measures 37-44. Includes accents (>) and dynamic markings *p*. The instruction *D.C. al Fine* is written above the staff.

# AMES HIGH LOYALTY

Tuba

Richard Day  
arr. by Roger Cichy

9



10

17



19

25



28

*Fine* 33



37

*D.C. al Fine*



Snare

AMES HIGH LOYALTY

Richard Day

3 R R L R L RLRLR L R R L R L

10 RLRLRLRL R R L R L RLRLR L R R L R L

17 RLRLRLRL R R L R L RLRLR L R R L R L

24 RLRLRLRL R R L R L RLRLR L

31 R R L R L RLRLR L RLRLRLRL R *Fine* 2 *RimShot* RLRLR RLRLR R

39 2 RLRLR RLRLR R *RimClick* R R L R r r R L R r r L r L R R R R *D.C. al Fine*

Quads

AMES HIGH LOYALTY

Richard Day

3 R R L R L RLRLR L R R L R L

10 RLRLRLRL R R L R L RLRLR L R R L R L

17 R L R L R R L R L RLRLR L R R L R L

24 RLRLRLRL R R L R L RLRLR L

31 R R L R L RLRLR L RLRLRLRL R *Fine* 2 RLRLR RLRLR R

39 2 RLRLR RLRLR R R L R R L R

# Bass

# AMES HIGH LOYALTY

Richard Day

3

16

17

24

31

39

19

Fine

2

D.C. al Fine

# Cymbals

# AMES HIGH LOYALTY

Richard Day

3

16

17

24

31

39

19

Fine

2

D.C. al Fine

# AMES HIGH LOYALTY

Mallets

Richard Day  
arr. by Roger Cichy

9

7

14

17

21

25

28

Fine 33

35

42

D.C. al Fine

R L R R L R R L R L R L R L R L

R L R L R L R L R L R L R L R L

R L R L R L R L R L R L R L R L

L R L R L R L R L R L R L R L

L L R L L R L R L

L R L R L R L R L R L

R L R L R L R L R L

# AMES HIGH LOYALTY

Mallet #2

Richard Day  
arr. by Roger Cichy

Play 8vb

7

9

14

17

21

25

28

Fine 33

34

41

*D.C. al Fine*

# AMES HIGH LOYALTY

Mallet - Bass

Richard Day  
arr. by Roger Cichy



9



17

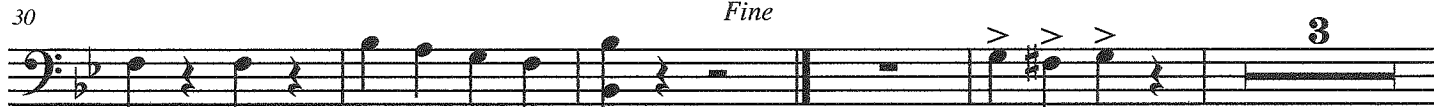


25



33

*Fine*



*D.C. al Fine*

